

MAKING THE ICEHOTEL

Stuart Harrison &
Lucas Ihlein
(SHLICE)

arriving in swedish
lapland (north o'
the arctic circle)



























the town of kiruna









northern sweden is
beautiful







Jukkas
järvi



















it is cold in the
arctic circle, at that
time of year





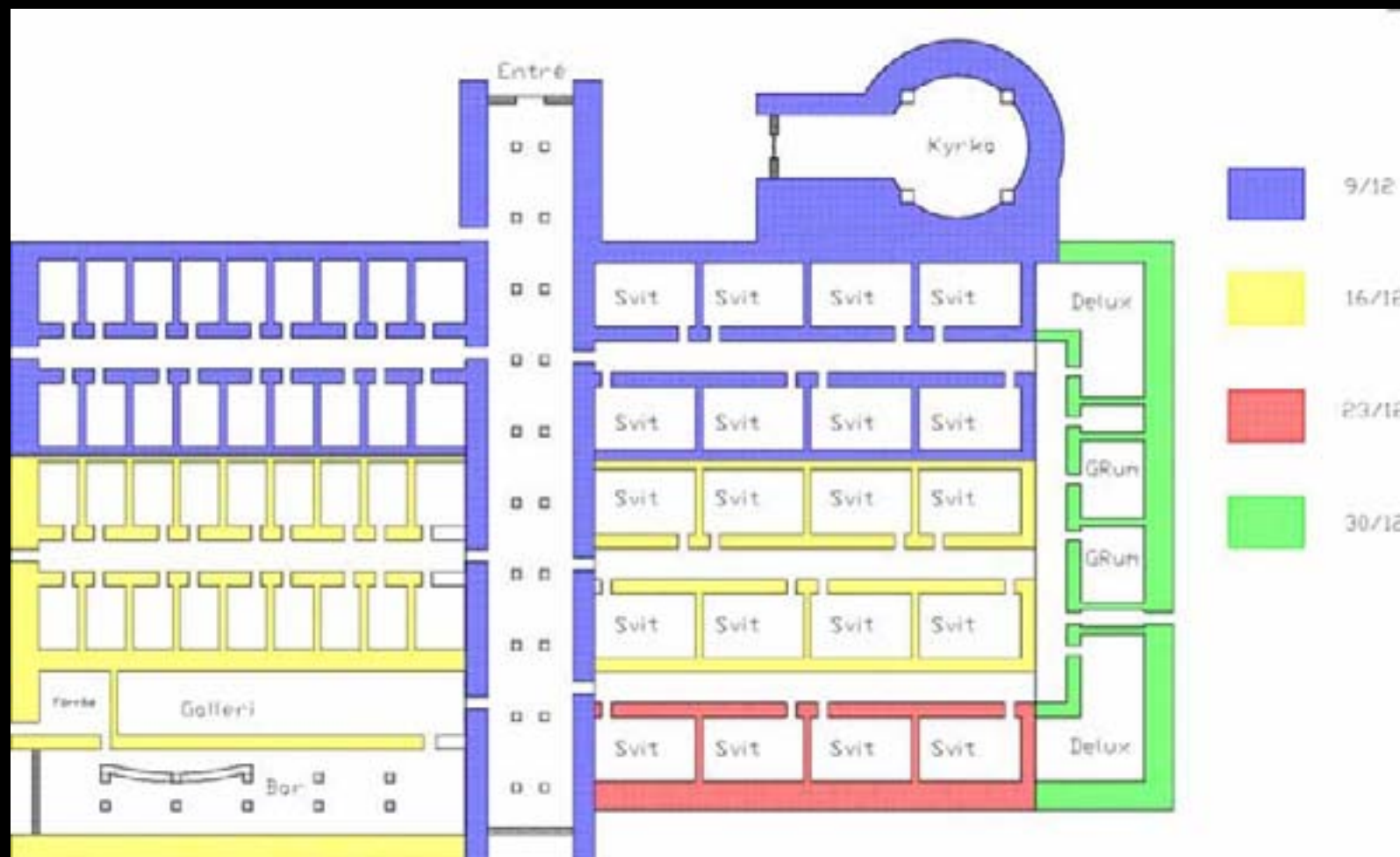








the building of the
icehotel
superstructure













movie: snow blowing

































Tillträde
förbjudet





Movie: see that ice there



Movie: See that ice there



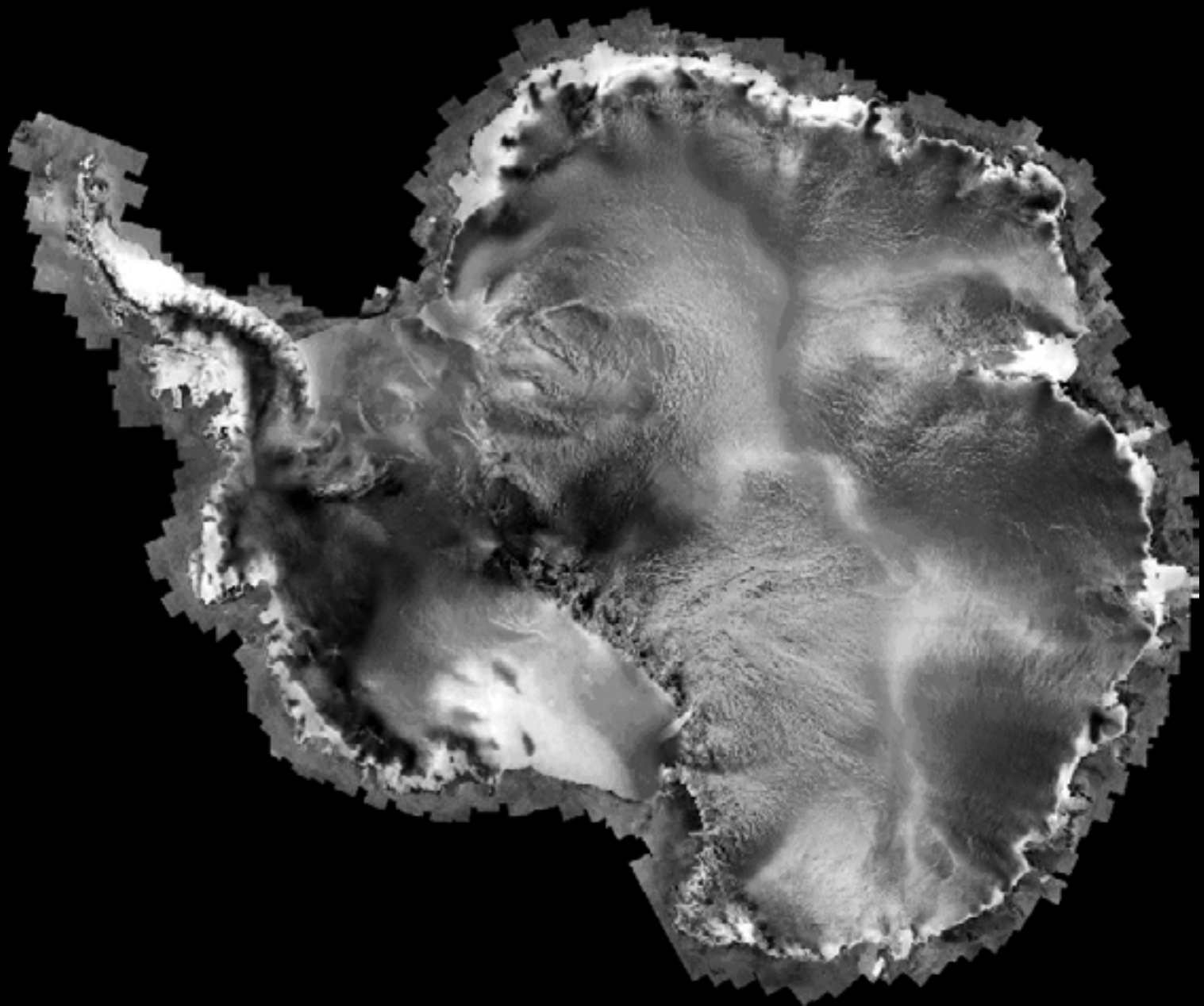


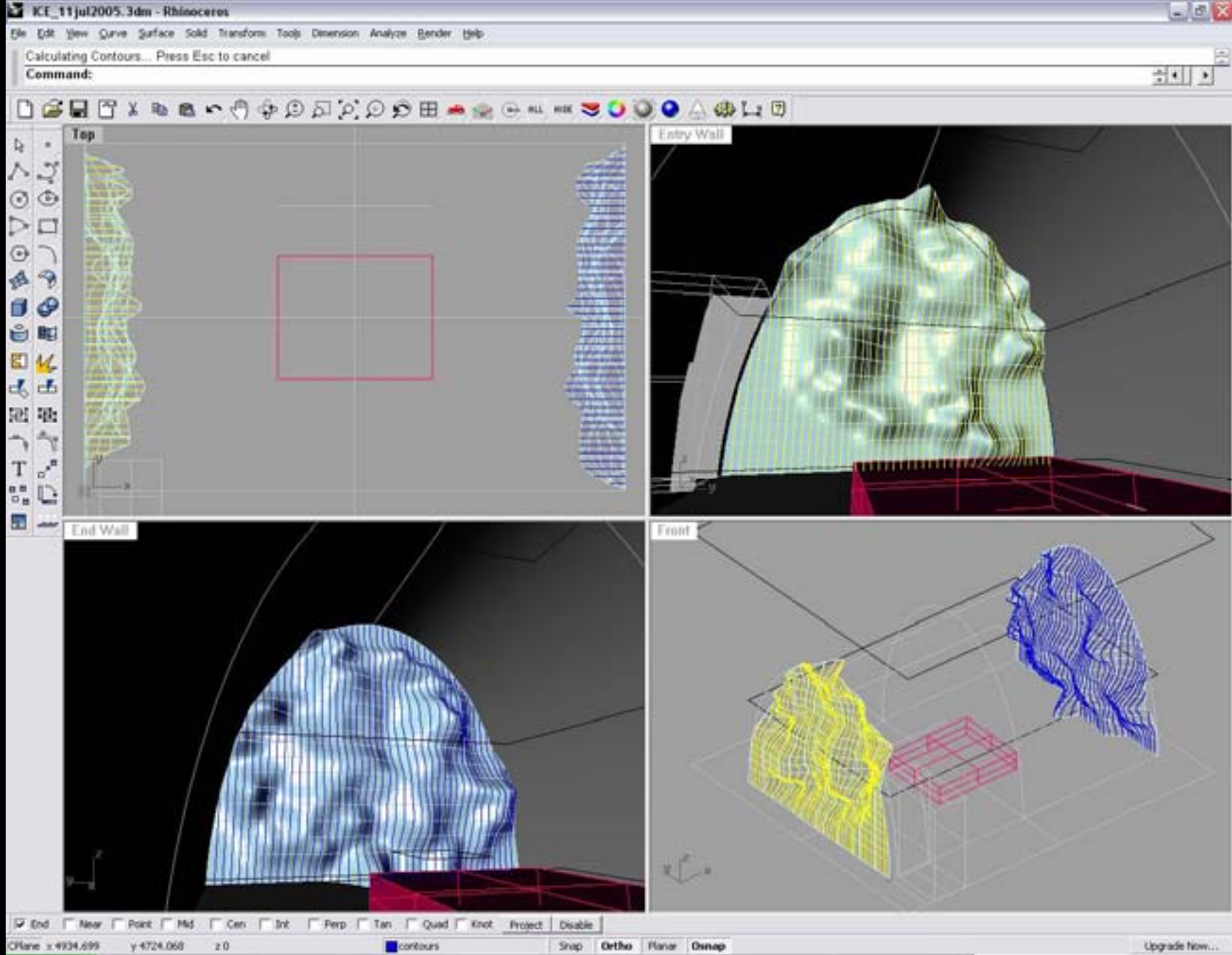


antarctic ice

shelves: how we

did it



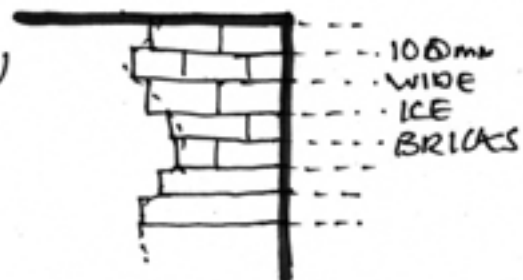


PROFILE SURFACING TECHNIQUE.

AXO

SERIES OF 20
'PROFILES' NEXT
TO EACH OTHER

PLAN

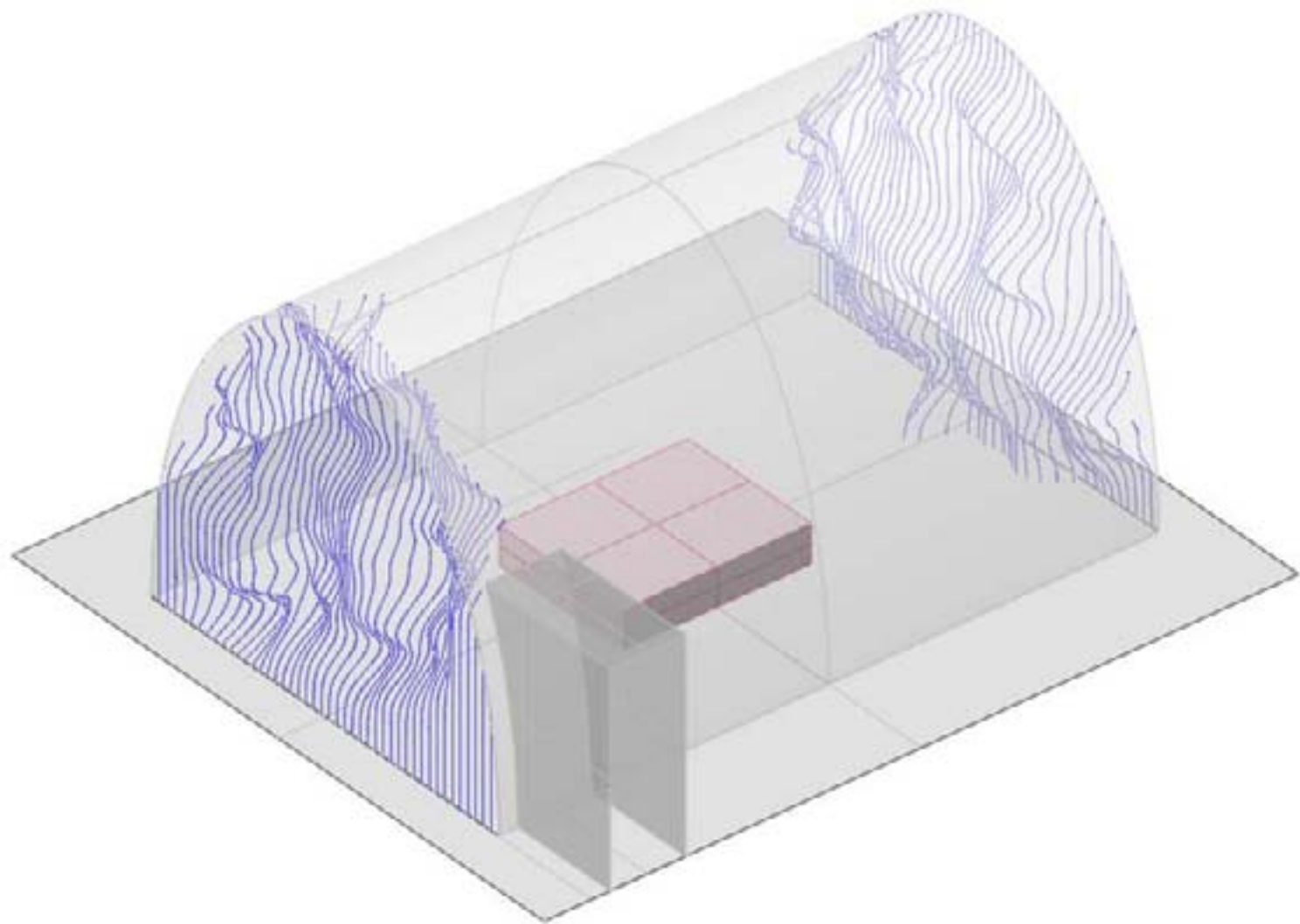


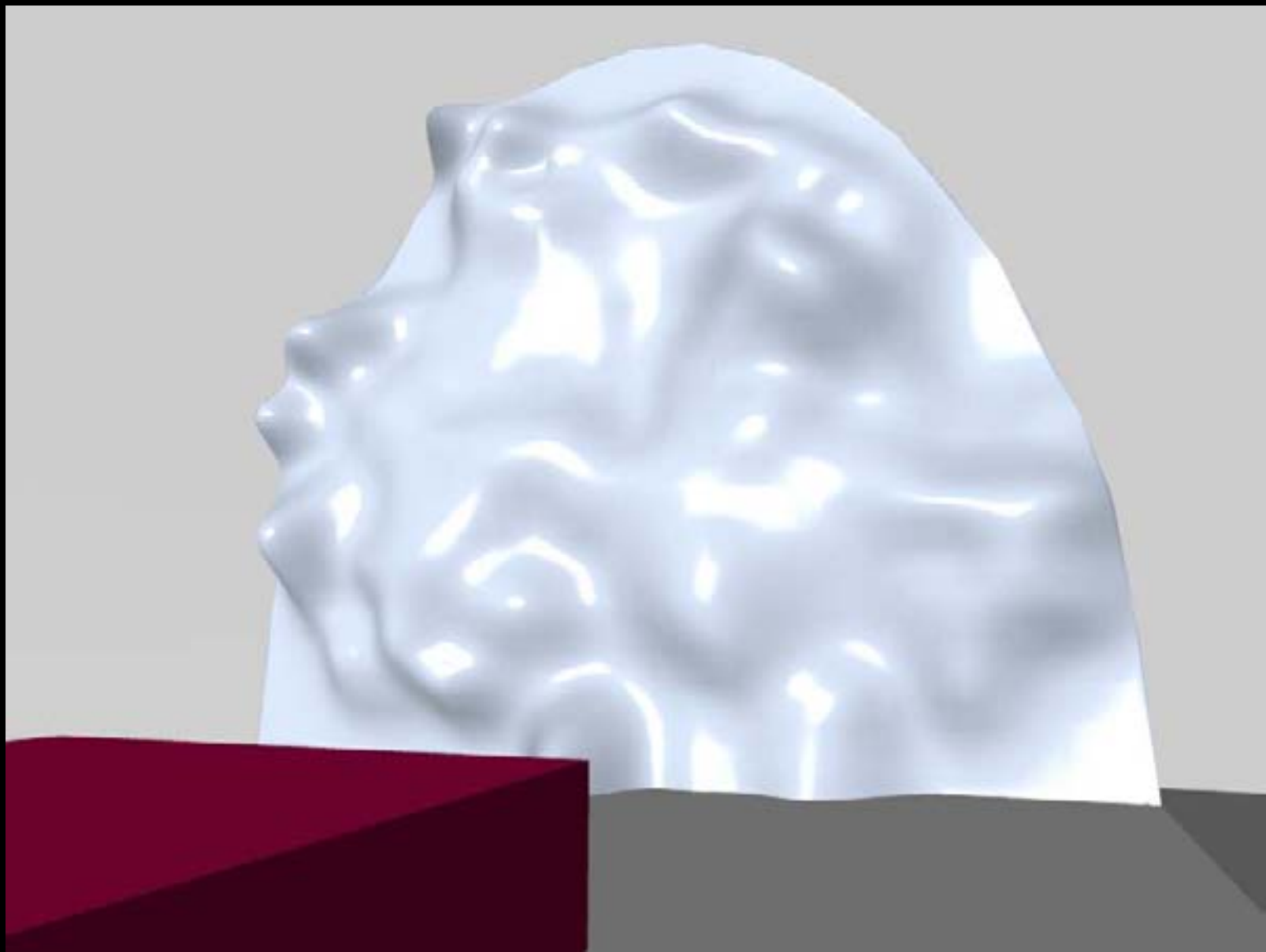
FLOOR
↓

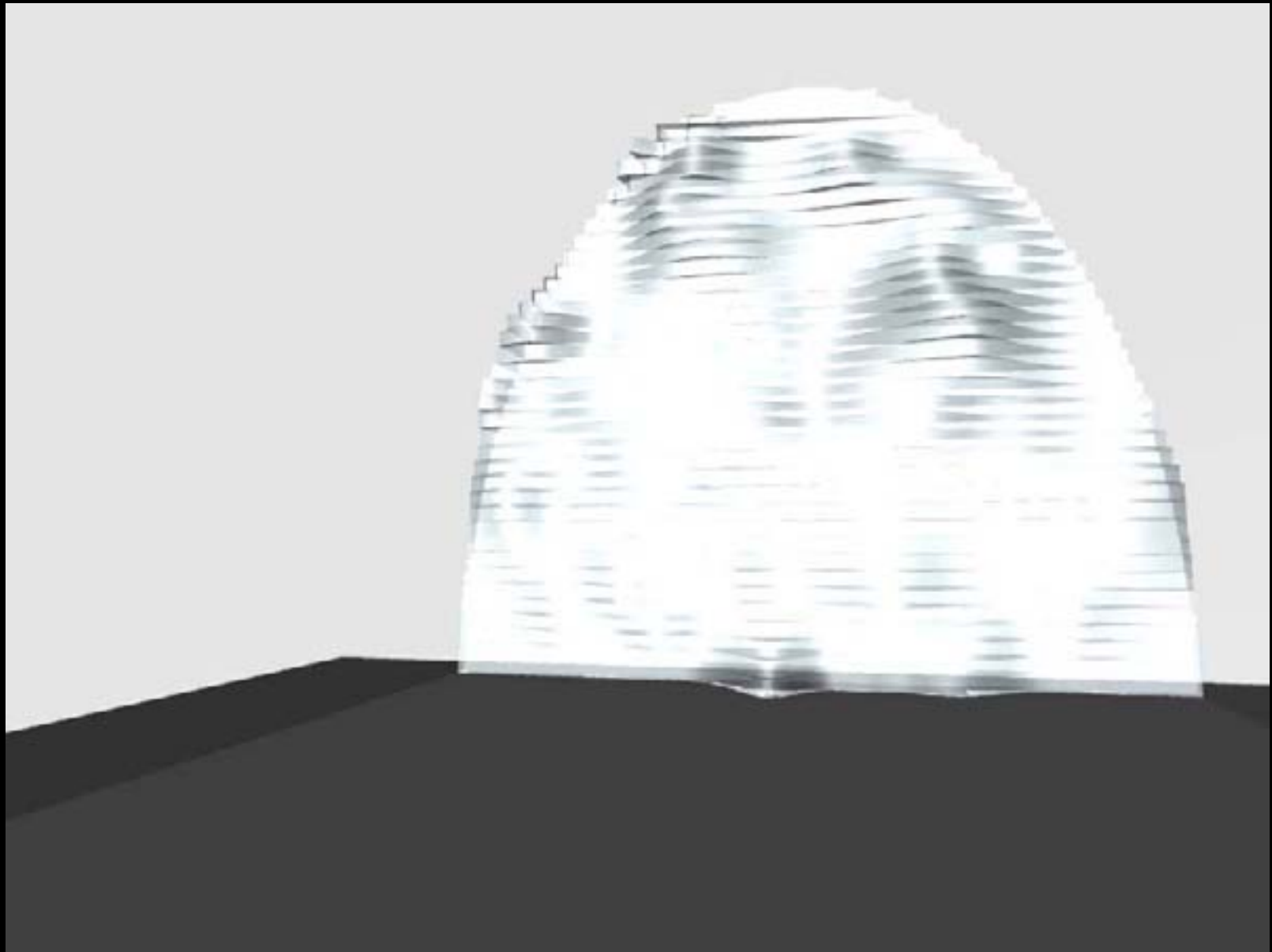
SECTION

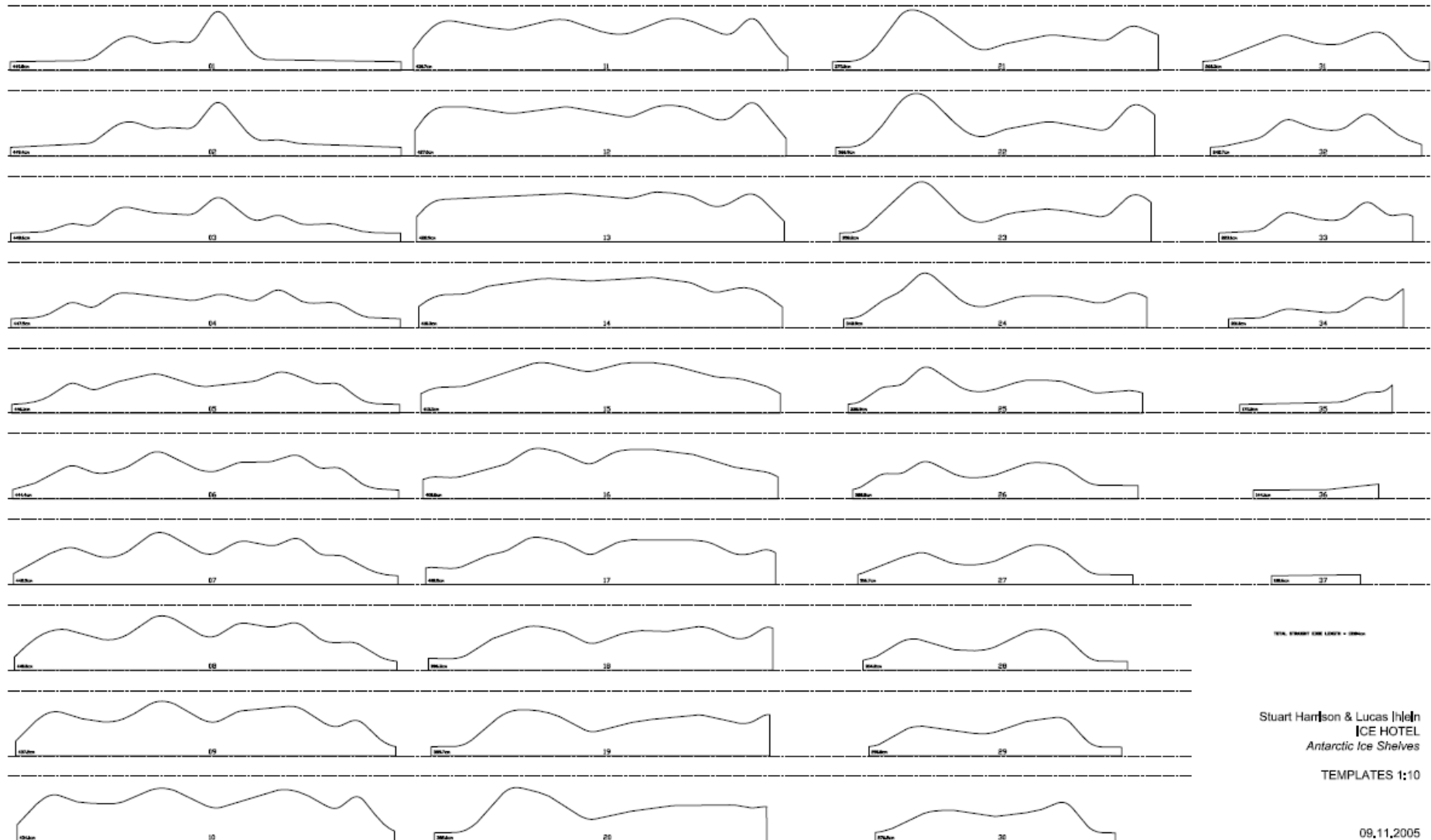
75mm HIGH ICE
BRICK COURSES

The section view shows the vertical profile of the wall. It consists of a series of horizontal layers, each made of ice bricks. The bricks are arranged in a staggered pattern, with each layer offset from the one below it. The height of the wall is indicated as 75mm.





















we learn about
chainsaws









we think about
ergonomics













































Movie: chainsawing







01A



SLICE © SLAB THETA























movie: drilling technique



movie: tunnel making 1











































antarctic ice
shelves, complete



















































footnotes:

torne river ice is
clear



The
chemical
brothers



footnotes:

the other suites

























































footnotes:

melting













footnotes:
socialising

















[the end]